

PRODUCT NO  
10052607-001LF

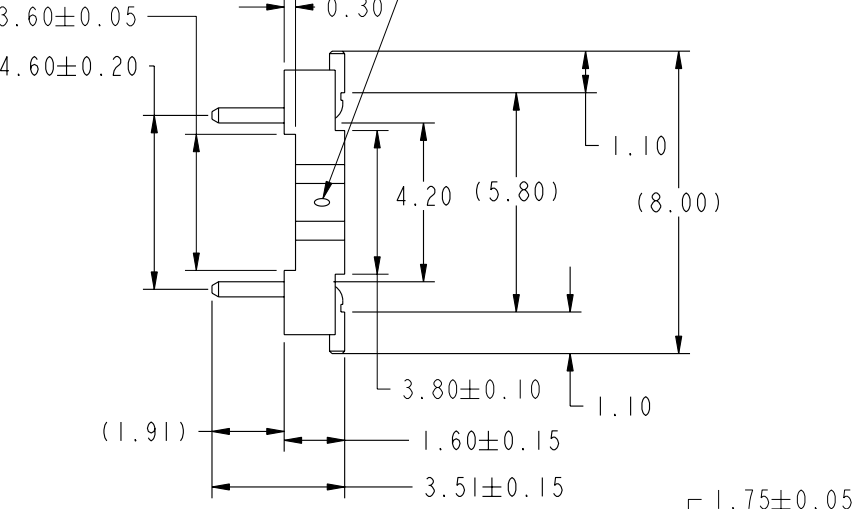
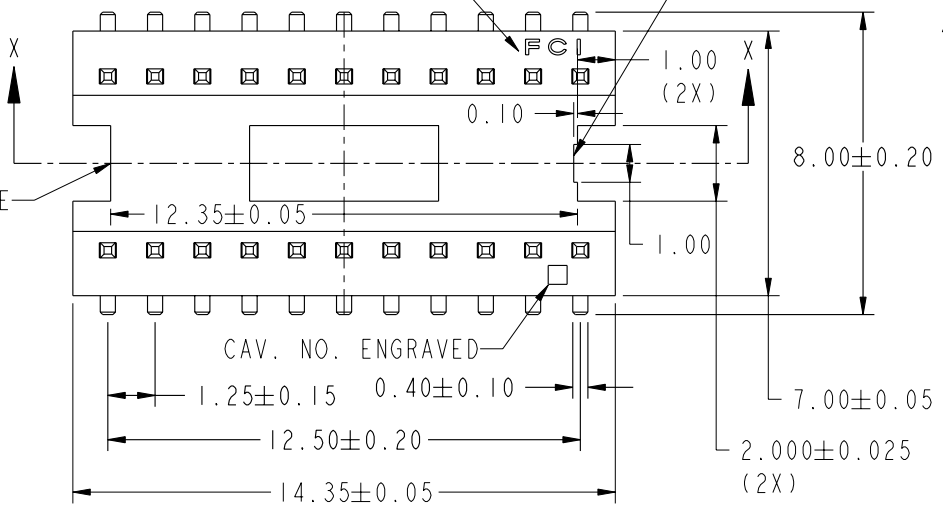
FCI LOGO ENGRAVED

CONCAVE FEATURE

GATE (REFER NOTE 4)  
DRAFT ANGLE (REFER DETAIL D)

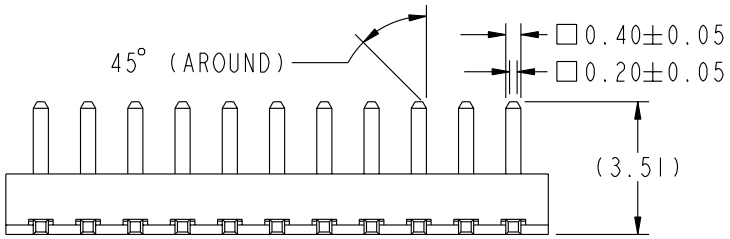
A

A

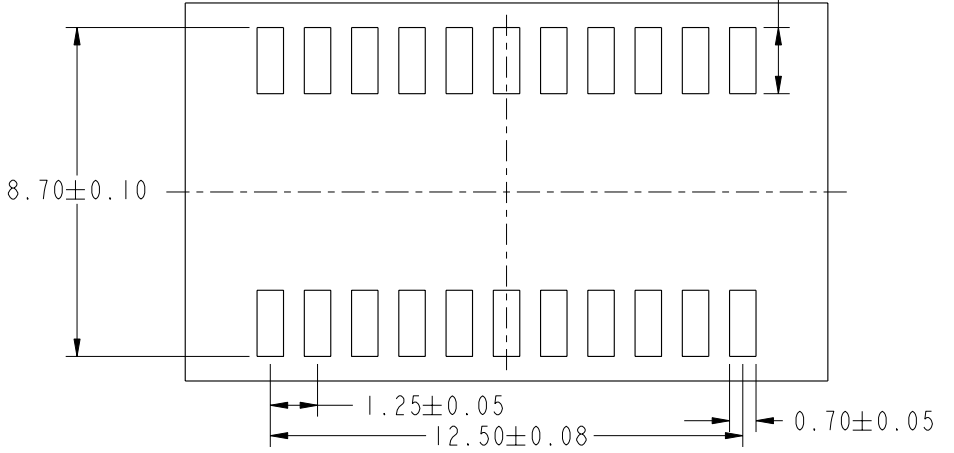


B

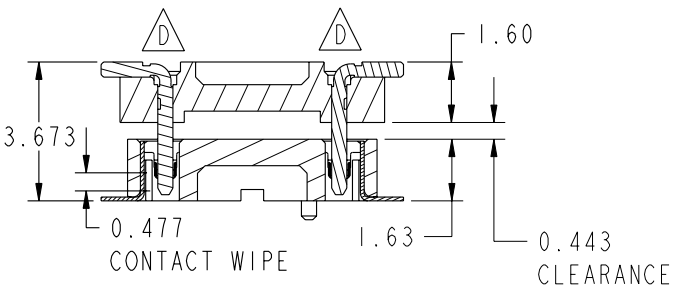
B



SCALE 5:1



RECOMMENDED PAD LAYOUT  
SCALE 5:1



ORDINARY MATING STATE

Copyright FCI.

D

D

rev	ecn no	dr	date
A	S07-0151	KHL	2007-05-03
B	S08-0148	KHL	2008-05-16
C	S08-0410	DGOH	2008-12-18
D	S09-0244	DGOH	2009-08-04
-	-	-	-
-	-	-	-

www.fciconnect.com			surface	<input checked="" type="checkbox"/>	tolerance std	projection	MM	
			TOLERANCES UNLESS OTHERWISE SPECIFIED					Scale 3:1
Dr	TAN SH	2005-01-07	ANGULAR	LINEAR	6 MAX	±0.2	A4	
Eng	TAN SH	2005-01-20			6 to 30 MAX	±0.3		
Chr	DENNIS GOH	2008-08-04	0°	±2°	30 to 120 MAX	±0.5	ECN	
Appr	JOEY NG	2009-08-04	Product family			Spec ref		
			title B+B 1.25P HEADER			dwg no 10052607		
			catalog no			CUSTOMER COPY sheet 1 of 2		
						Rev. D		

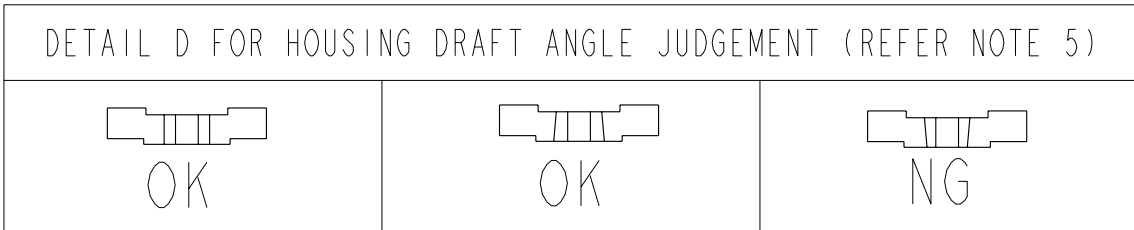
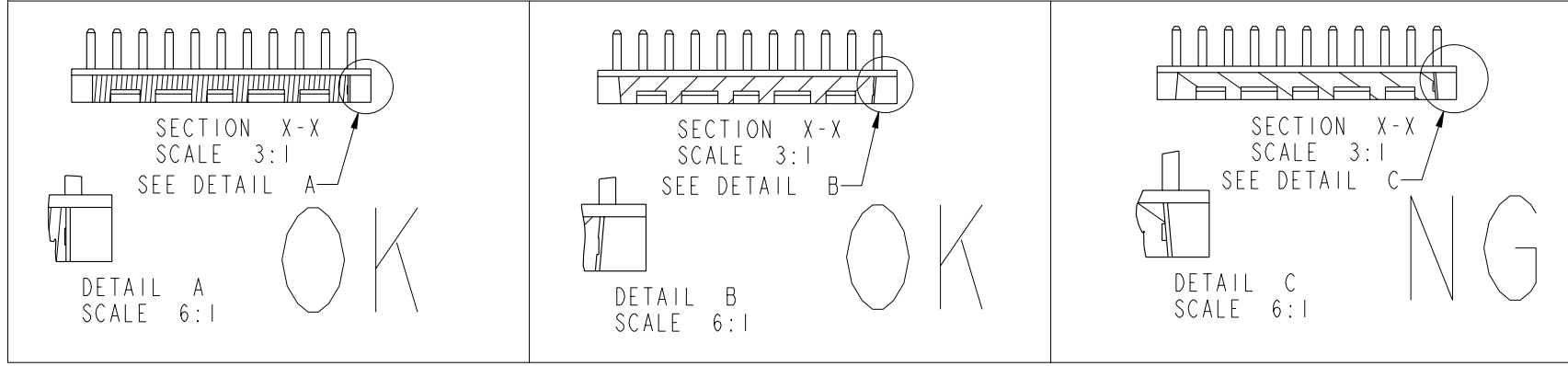
A

B

A

B

SECTION X -X FOR TAPER JUDGEMENT STANDARD (REFER NOTE 5)



NOTES

- MATERIAL:  
HOUSING: LCP, BLACK, UL94V-0  
CONTACT: PHOSPHOR BRONZE
- FINISH:  
1.27-5.00  $\mu$ m NICKEL UNDERPLATE OVERALL  
0.10-0.30  $\mu$ m GOLD AT CONTACT AREA  
0.05-0.20  $\mu$ m GOLD AT SOLDER AREA
- COPLANARITY OF TERMINAL: 0.1 mm MAX.
- NO REMAINS OF GATING AND REMOVAL OF REMAINS ARE ALLOWED ON HOUSING SURFACES.
- IF DRAFT ANGLE IS APPLIED (AS SHOWN IN SECTION X-X AND DETAIL D), ONLY THE INDICATED "OK" FEATURES ARE ALLOWED WITH DIMENSIONS WITHIN THE TOLERANCE RANGE.
- PRODUCT SPECIFICATION: GS-12-391.
- PACKAGING SPECIFICATION: GS-14-1088
- THIS PRODUCT MEETS EUROPEAN UNION DIRECTIVES AND OTHER COUNTRY REGULATIONS AS DESCRIBED IN GS-22-008.
- THE HOUSING WILL WITHSTAND EXPOSURE TO 260°C PEAK TEMPERATURE FOR 10 SECONDS IN A CONVECTION, INFRA-RED OR VAPOR PHASE REFLOW OVEN.
- THIS PRODUCT COMPLIES WITH:  
NICA00001-0451 COMMON SPECIFICATION ON MATERIAL-CAUSED FAILURES  
NICA00001-5468  
AICA00051-0560 GENERAL SPECIFICATION ON SUBSTANCE CONTROL REQUIREMENTS  
LOCA52300-078X CONNECTOR PURCHASE SPECIFICATION
- A  $\triangle$  SYMBOL WILL BE NEXT TO ANY DIMENSION, VIEW OR NOTE WHICH HAS BEEN MODIFIED WITH THE CURRENT DRAWING REVISION.



Copyright FCI.

C

D

C

D

	title	B+B 1.25P HEADER	dwg no	10052607	Rev.	D
	catalog no		CUSTOMER COPY	sheet 2 of 2		