

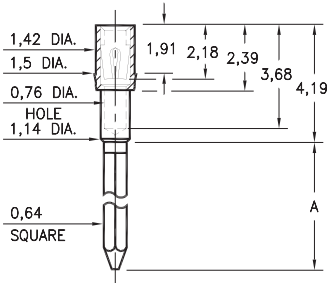
# WRAPOST RECEPTACLES

FOR 0,38 - 0,64 DIAMETER PINS

## 1702/1703

170X-X-15-XX-30-XX-02-0

Press-fit in 1,45 mounting hole

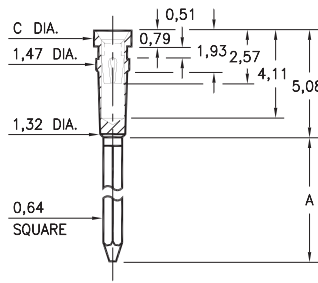


Basic Part Number	# of Wraps	Length A
1702-2	2	9,4
1703-3	3	12,95

## 0038⇨0040/0066⇨0068

00XX-X-17-XX-30-XX-02-0

Press-fit in 1,45 mounting hole

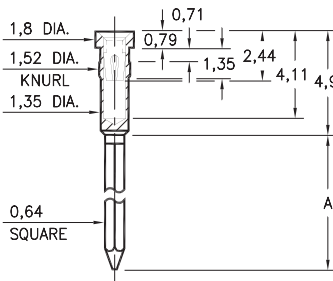


Basic Part #	# of Wraps	Length A	Dia. C
0040-1	1	6,6	
0039-2	2	9,14	1,83
0038-3	3	12,7	
0068-1	1	6,6	
0067-2	2	9,14	1,57
0066-3	3	12,7	

## 0086/0088/0089

008X-X-17-XX-3X-XX-02-0

Press-fit in 1,45 mounting hole

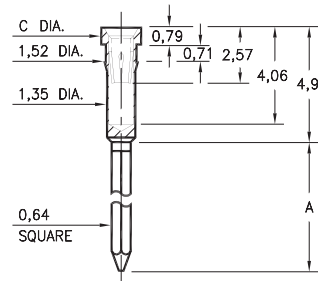


Basic Part Number	# of Wraps	Length A
0089-2	2	9,4
0088-3	3	12,95
0086-4	4	16,0

## 1030⇨1036

103X-X-17-XX-3X-XX-02-0

Press-fit in 1,45 mounting hole

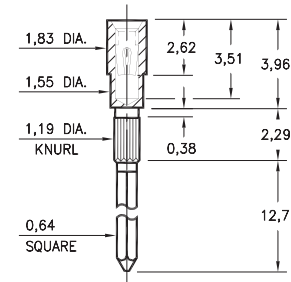


Basic Part #	# of Wraps	Length A	Dia. C
1032-1	1	6,6	
1031-2	2	9,14	1,83
1030-3	3	12,95	
1036-1	1	6,6	
1035-2	2	9,14	1,57
1034-3	3	12,95	

## 1045

1045-3-17-XX-30-XX-02-0

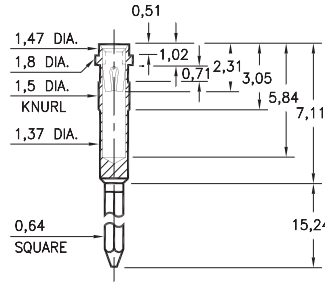
Press-fit in 1,09 mounting hole



## 1040

1040-3-17-XX-30-XX-02-0

Press-fit in 1,42 mounting hole



### SPECIFICATIONS:

Shell Material: Brass Alloy 360, 1/2 Hard

Contact Material: Beryllium Copper Alloy 172, HT

Dimensions: Millimeters

Tolerances On: Lengths: ±0,13

Diameters: ±0,051

Angles: ±2°



ORDER CODE: **XXXX - X - 17 - XX - XX - XX - 02 - 0**

BASIC PART #

SPECIFY SHELL FINISH:

- 01 5,08µm TIN/LEAD OVER NICKEL
- ◆ 80 5,08µm TIN OVER NICKEL (RoHS)
- ◆ 15 0,25µm GOLD OVER NICKEL (RoHS)

SPECIFY CONTACT FINISH:

- 02 2,54µm TIN/LEAD OVER NICKEL
- ◆ 84 2,54µm TIN OVER NICKEL (RoHS)
- ◆ 27 0,76µm GOLD OVER NICKEL (RoHS)

SELECT CONTACT:

#30 or #32 CONTACT (DATA ON PAGE 253)

(For alternate contact choices, see groups B and C on page 248)

